



ECONOMIC INDICATORS

NEW SOUTH WALES

EMBARGO: 11:30AM (CANBERRA TIME) MON 15 JAN 2001

C O N T E N T S

	<i>Page</i>
Notes	2
NSW overview	3
Main features	4
List of tables and graphs	5
Population	6
Labour	7
Production	10
Building	11
Retail trade	12
New motor vehicle registrations	13
Tourism	14
Consumer and producer price indexes	15
Finance	16
State Government finance	17
Investment	18
International trade	19

- For further information about these and related statistics, contact Jill Tomlinson on Sydney 02 9268 4123, or the National Information Service on 1300 135 070.

NOTES

FORTHCOMING ISSUES

<i>ISSUE</i>	<i>ISSUE DATE</i>
February 2001	15 February 2001
March 2001	15 March 2001
April 2001	17 April 2001
May 2001	15 May 2001
June 2001	15 June 2001
July 2001	16 July 2001

DATA NOTES

ABS statistical series are being impacted to varying degrees as a result of The New Tax System (TNTS), introduced in Australia from 1 July 2000. TNTS included the removal of Wholesale Sales Tax and the introduction of a Goods and Services Tax (GST), and as a result, a wide range of ABS data series will reflect significant immediate and subsequent impacts. For further information see *Australian Economic Indicators, July 2000* (Cat. no. 1350.0).

GENERAL

This publication provides information on a wide range of economic indicators which are the latest available at the time of publication. In a number of cases, figures appearing in this summary are preliminary and are subject to revision in subsequent issues.

SEASONAL ADJUSTMENT AND TREND ESTIMATION

Seasonal adjustment is a means of removing the estimated effects of normal seasonal variation from a series so that the effects of other variations on that series can be more clearly recognised. This means that movements of seasonally adjusted estimates may not be reliable indicators of trend behaviour. Smoothing seasonally adjusted series produces a measure of the underlying trend by reducing the impact of the irregular component of the series. For an explanation of seasonal adjustment derivation, refer to the publication *Seasonally Adjusted Indicators* (Cat. no. 1308.0).

SYMBOLS AND OTHER USAGES

kWh	kilowatt hour
n.a.	not available
n.p.	not available for publication but included in totals where applicable
n.y.a	not yet available
r	figure or series revised since previous issue
. .	not applicable
—	nil or rounded to zero
—	break in continuity of series (where a line is drawn across a column between two consecutive figures)

Geoff Smith
Regional Director
New South Wales

NSW OVERVIEW

POPULATION	The NSW estimated resident population at June 2000 was 6,463,500 persons. Since March 2000, the population increased by 17,800 persons, of which natural increase contributed 70% of the growth.
EMPLOYMENT	Employment in NSW dropped by 0.9% in November 2000 to a seasonally adjusted figure of 3,013,800. National employment in November 2000 was 9,047,100.
UNEMPLOYMENT	Unemployment in NSW was a seasonally adjusted figure of 185,400 in November 2000. The unemployment rate was 5.8%, an increase of 0.3 percentage points. The national unemployment rate was 6.6% in November 2000.
INDUSTRIAL DISPUTES	In NSW in September 2000 there were 8,300 working days lost due to industrial disputes, a decrease of 4.6% on the working days lost in the previous month. Nationally there were 31,000 working days lost due to industrial disputes in September 2000.
BUILDING APPROVALS	The seasonally adjusted number of new dwelling units approved for NSW in October 2000 increased by 28.4% from the previous month to 3,571 dwelling units. This was a decrease of 24.9% on the corresponding month of the previous year. Nationally, there were 9,496 new dwelling units, an increase of 6% from the previous month.
RETAIL	In seasonally adjusted terms, total retail sales for NSW in October 2000 was \$4,471.6 million. This was a decrease of 2.5% on the previous month.
NEW MOTOR VEHICLE REGISTRATIONS	New motor vehicle registrations for NSW in seasonally adjusted terms in October 2000 decreased by 5.8% compared to the previous month to 21,653 registrations.
TOURISM	In NSW, the annual movements recorded an increase of 5.9% in room nights occupied, and the takings from accommodation increased significantly with an overall increase of 48.1%.
FINANCE	The seasonally adjusted value of housing finance commitments for owner occupation in NSW in October 2000 was \$2,051 million, a decrease of 5.3% on the previous month and an overall decrease of 29.1% on October 1999.
GOVERNMENT FINANCE STATISTICS (GFS)	The underlying General Government operating surplus for the four months ended 31 October 2000 was \$117 million. The General Government Net Lending result for the four months ended 31 October 2000 was \$199 million.
INVESTMENT	The total actual private fixed capital expenditure, current prices (trend) for NSW in the September quarter 2000 was \$4,166 million, an increase of 5.3% from the June quarter 2000 and an increase of 19.2% from the corresponding period of the previous year.
IMPORTS AND EXPORTS	The customs value of imports into NSW during October 2000 was \$4,865 million, an increase of 8.3% on September 2000. The value of exports (FOB) from NSW in October 2000 was \$2,008 million, an increase of 8.9% over the same period.

MAIN FEATURES

BUILDING APPROVALS

There has been an increase in the number of new houses approved this month. The number of new houses (seasonally adjusted) was 1,733 in NSW, an increase of 23.3% on the previous month but a decrease of 36.7% from the corresponding period of the previous year. The number of new dwelling units (seasonally adjusted) in October 2000 was 3,571 an increase of 28.4% on September 2000 but a decrease of 24.9% from October 1999. Nationally, the number of new dwelling units was 9,496 an increase of 6% from September 2000 and a decrease of 39% from October 1999.

For NSW in October 2000 the seasonally adjusted value of new residential building was \$458.2 million, an increase of 15.2% from September 2000 but a decrease of 21.3% from October 1999. The value (seasonally adjusted) of alterations and additions to residential building in October 2000 increased 42.4% from the previous month to \$115.6 million.

The value (in original terms) of non-residential building in NSW increased 23.2% from September 2000 to \$380.7 million and increased 43% from October 1999. The value of all building (in original terms) in NSW was \$938.4 million, an increase of 22.7% from September 2000. Nationally, the value of all building was \$2,520.7 million which represented an increase of 5.9% on September 2000 but a decrease of 13% on the corresponding period the previous year.

TOURISM

Demand for accommodation across NSW for room nights occupied in licensed hotels, motels and guest houses and serviced apartments with 15 or more rooms or units in the September quarter 2000 increased by 5.9% when compared with the September quarter 1999. Quarterly movements showed an increase of 6.6% from the previous June quarter.

In NSW the room occupancy rates for licensed hotels, motels and guest houses and serviced apartments in the September quarter 2000 were lower than those recorded in September quarter 1999 (down by 1.4 percentage points to 59.7%). However, during the month of September the occupancy rate was 66.8%, up 3.1 percentage points on the same time last year.

The Sydney Tourism Region (TR) experienced a 12.2% increase in room nights occupied in licensed hotels, motels and guest houses and serviced apartments between September quarter 1999 and September quarter 2000. In this TR, the room occupancy rate for the September quarter 2000 for accommodation establishments overall was 69.6%, a decrease of two percentage points over the year, however room supply increased by 14.3% over the same period.

In the Sydney TR takings from accommodation increased significantly in aggregate for each accommodation type in the September quarter 2000 compared with the September quarter 1999 with an overall increase of 66.6% to \$412.4 million. In NSW, takings from accommodation were \$555.2 million for the September quarter 2000, an increase of 48.1% compared with the same period previous year. This may reflect both the impact of the Olympic Games and the effect of the GST.

LIST OF TABLES AND GRAPHS

page

POPULATION	1 Estimated resident population, NSW	6
LABOUR	2 Labour data, latest time period, NSW and Australia	7
	3 Labour data, time series, NSW	7
	4 Labour force status of the civilian population, NSW	8
	5 Graph: Unemployment rates, NSW and Australia	9
	6 Coal and electricity production, latest time period, NSW and Australia	10
PRODUCTION	7 Coal and electricity production, time series, NSW	10
BUILDING	8 Building approvals, latest time period, NSW and Australia	11
	9 Building approvals, time series, NSW	11
RETAIL TRADE	10 Turnover of retail establishments, latest time period, NSW and Australia	12
	11 Turnover of retail establishments, seasonally adjusted, time series, NSW	12
NEW MOTOR VEHICLE REGISTRATIONS	12 New motor vehicle registrations, latest time period, NSW and Australia	13
	13 New motor vehicle registrations, seasonally adjusted, time series, NSW	13
TOURISM	14 Accommodation Establishments, latest time period, NSW and Australia	14
	15 Accommodation Establishments, time series, Sydney and NSW	14
	16 Graph: Hotels, motels etc., monthly room occupancy rates, Sydney Tourism Region and NSW	14
CONSUMER AND PRODUCER PRICE INDEXES	17 Consumer and producer price indexes, latest time period, NSW and Australia	15
	18 Consumer and producer price indexes, time series, NSW	15
	19 Graph: Consumer Price Index, Sydney and average of 8 capital cities	15
FINANCE	20 Finance commitments, latest time period, NSW and Australia	16
	21 Finance commitments, time series, NSW	16
STATE GOVERNMENT FINANCE	22 Government finance, general government sector, monthly operating statement, NSW	17
INVESTMENT	23 Actual private new fixed capital expenditure, latest time period, NSW and Australia	18
	24 Actual private new fixed capital expenditure, time series, NSW	18
	25 Graph: Actual private new fixed capital expenditure by type of asset, trend estimate, NSW	18
INTERNATIONAL TRADE	26 Imports and exports, latest time period, NSW and Australia	19
	27 Imports and exports, time series, NSW	19

1 ESTIMATED RESIDENT POPULATION—NSW

	<i>Estimated resident population at end of period</i>			<i>Increase during period</i>			<i>Mean estimated resident population for year ended</i>	
	<i>Males</i>	<i>Females</i>	<i>Persons</i>	<i>Natural increase(a)</i>	<i>Net estimated migration</i>	<i>Total increase</i>	<i>30 June</i>	<i>31 December</i>
	<i>'000</i>	<i>'000</i>	<i>'000</i>	<i>'000</i>	<i>'000</i>	<i>'000</i>	<i>'000</i>	<i>'000</i>
1997	3 129.0	3 171.5	6 300.5	40.9	17.6	58.5	6 240.9	6 276.1
1998	3 164.5	3 204.0	6 368.5	39.9	28.1	68.1	6 303.5	6 335.7
1999	3 199.8	3 236.9	6 436.7	42.3	25.8	68.2	6 367.3	6 398.3
1999								
March qtr	3 171.0	3 210.5	6 381.5	10.7	2.3	13.0
June qtr	3 179.2	3 217.5	6 396.7	10.1	5.1	15.2
September qtr	r 3 187.8	r 3 224.7	r 6 412.5	8.1	r 7.7	r 15.8
December qtr	r 3 198.5	r 3 235.1	r 6 433.6	13.4	r 7.7	r 21.1
2000								
March qtr	r 3 205.0	r 3 240.6	r 6 445.7	7.6	4.5	12.1
June qtr	3 214.6	3 248.9	6 463.5	12.5	5.2	17.8

(a) Excess of live births over deaths.

Source: Australian Demographic Statistics (Cat. no. 3101.0).

2 LABOUR—NSW AND AUSTRALIA

	Unit	New South Wales					Australia	
		Latest period	Latest figure	Change from prior period	Change from same period prior year	Latest figure	Change from prior period	Change from same period prior year
				%	%		%	%
Employed persons (seasonally adjusted)	'000	November 2000	3 013.8	-0.9	1.8	9 047.1	-0.6	2.0
Unemployed persons (seasonally adjusted)	'000	November 2000	185.4	5.2	4.8	637.1	3.5	-1.4
Labour force (seasonally adjusted)	'000	November 2000	3 199.2	-0.5	2.0	9 684.2	-0.4	1.7
Participation rate (seasonally adjusted)	%	November 2000	61.9	-0.5	0.7	63.3	-0.5	0.3
Unemployment rate (seasonally adjusted)	%	November 2000	5.8	5.5	3.6	6.6	4.8	-2.9
Industrial disputes—working days lost	'000	September 2000	8.3	-4.6	-75.4	31.0	-5.8	-52.2
Job vacancies	'000	August 2000	43.9	5.0	-9.1	127.7	19.5	16.1
Average weekly employee earnings—full-time adult ordinary time earnings (seasonally adjusted)	\$	August 2000	834.9	1.2	5.9	798.3	1.9	6.1

Source: Average Weekly Earnings, States and Australia (Cat. no. 6302.0); Industrial Disputes, Australia (Cat. no. 6321.0); Job Vacancies, Australia (Cat. no. 6354.0); Labour Force, Australia, Preliminary (Cat. no. 6202.0).

3 LABOUR—NSW

	Seasonally adjusted						
	Employed persons	Unemployed persons	Labour force	Participation rate	Unemployment rate	Industrial disputes (working days lost)	Job vacancies
	'000	'000	'000	%	%	'000	'000
1999							
September	2 948.9	217.8	3 166.7	62.2	6.9	33.8	..
October	2 967.0	190.0	3 157.0	61.9	6.0	16.7	..
November	2 960.5	176.9	3 137.4	61.5	5.6	121.4	36.9
December	2 971.5	199.9	3 171.4	62.0	6.3	29.1	..
2000							
January	2 974.0	189.5	3 163.5	61.8	6.0	7.5	..
February	3 004.5	186.4	3 190.9	62.3	5.8	20.1	46.4
March	3 013.9	193.3	3 207.2	62.5	6.0	11.8	..
April	3 038.2	181.8	3 220.0	62.7	5.6	20.0	..
May	3 053.4	185.1	3 238.5	63.0	5.7	47	41.8
June	3 038.4	187.9	3 226.3	62.7	5.8	16.3	..
July	3 060.2	173.4	3 233.6	62.7	5.4	7.5	..
August	3 070.3	178.6	3 248.9	63.0	5.5	8.7	43.9
September	3 059.7	176.8	3 236.5	62.7	5.5	8.3	..
October	3 040.5	176.2	3 216.7	62.2	5.5	n.y.a.	..
November	3 013.8	185.4	3 199.2	61.9	5.8	n.y.a.	..

Source: Industrial Disputes, Australia (Cat. no. 6321.0); Job Vacancies, Australia (Cat. no. 6354.0); Labour Force, Australia, Preliminary (Cat. no. 6202.0).

4 LABOUR FORCE STATUS, NSW—ORIGINAL

	<u>Employed</u>		<u>Unemployed</u>		Labour force	Not in labour force	Civilian population aged 15 years and over	Unemployment rate(a)	Participation rate(b)
	Full-time workers	Total	Looking for						
			full-time work	Total					
'000	'000	'000	'000	'000	'000	'000	%	%	
MALES									
November									
1996	1 416.1	1 587.9	116.2	132.6	1 720.5	684.3	2 404.8	7.7	71.5
1997	1 431.3	1 615.4	117.5	136.6	1 752.0	685.1	2 437.1	7.8	71.9
1998	1 441.2	1 633.0	112.0	129.4	1 762.4	709.1	2 471.5	7.3	71.3
1999									
September	1 502.7	1 696.2	97.6	124.8	1 820.9	681.5	2 502.4	6.9	72.8
October	1 504.7	1 688.4	87.4	105.5	1 793.9	712.6	2 506.4	5.9	71.6
November	1 498.9	1 681.8	81.4	95.1	1 777.0	733.5	2 510.5	5.4	70.8
December	1 530.2	1 711.0	95.2	116.1	1 827.0	687.5	2 514.5	6.4	72.7
2000									
January	1 497.6	1 680.2	104.8	119.9	1 800.1	717.6	2 517.7	6.7	71.5
February	1 503.6	1 694.0	95.8	113.8	1 807.8	713.1	2 520.9	6.3	71.7
March	1 494.2	1 701.8	93.5	114.1	1 815.9	708.2	2 524.0	6.3	71.9
April	1 504.7	1 716.6	81.8	100.5	1 817.1	710.5	2 527.6	5.5	71.9
May	1 504.2	1 719.5	79.7	98.2	1 817.7	713.5	2 531.1	5.4	71.8
June	1 517.3	1 718.7	86.3	100.5	1 819.2	715.5	2 534.7	5.5	71.8
July	1 528.2	1 732.5	81.4	99.6	1 832.1	705.5	2 537.6	5.4	72.2
August	1 492.5	1 701.7	87.1	101.2	1 802.8	737.7	2 540.5	5.6	71.0
September	1 519.3	1 738.0	85.8	106.6	1 844.6	698.9	2 543.5	5.8	72.5
October	1 506.1	1 719.3	85.0	101.5	1 820.9	724.6	2 545.5	5.6	71.5
November	1 489.4	1 700.1	88.3	104.8	1 805.0	742.5	2 547.4	5.8	70.9
FEMALES									
November									
1996	732.1	1 215.9	49.7	81.9	1 297.8	1 198.8	2 496.5	6.3	52.0
1997	727.5	1 230.3	61.3	87.0	1 317.4	1 210.5	2 527.9	6.6	52.1
1998	733.3	1 235.5	61.0	96.8	1 332.3	1 227.2	2 559.6	7.3	52.1
1999									
September	749.9	1 285.6	61.3	97.6	1 383.2	1 204.7	2 587.9	7.1	53.4
October	767.2	1 289.1	51.3	77.1	1 366.2	1 225.1	2 591.3	5.6	52.7
November	756.5	1 283.3	50.5	71.8	1 355.1	1 239.7	2 594.8	5.3	52.2
December	788.4	1 307.0	54.7	80.9	1 387.9	1 210.4	2 598.3	5.8	53.4
2000									
January	776.9	1 257.2	55.3	80.7	1 337.9	1 262.8	2 600.7	6.0	51.4
February	755.7	1 282.3	57.0	98.2	1 380.5	1 222.7	2 603.2	7.1	53.0
March	771.1	1 307.8	57.0	92.4	1 400.2	1 205.4	2 605.6	6.6	53.7
April	791.3	1 318.7	52.1	82.4	1 401.1	1 207.3	2 608.4	5.9	53.7
May	784.9	1 324.9	53.2	83.7	1 408.7	1 202.5	2 611.2	5.9	53.9
June	783.4	1 326.0	39.8	76.1	1 402.2	1 211.8	2 614.0	5.4	53.6
July	812.3	1 344.0	36.0	60.9	1 404.8	1 211.8	2 616.7	4.3	53.7
August	787.2	1 329.4	40.1	72.3	1 401.7	1 217.6	2 619.3	5.2	53.5
September	805.6	1 356.4	43.0	73.9	1 430.3	1 191.7	2 622.0	5.2	54.6
October	784.8	1 332.5	40.1	67.7	1 400.2	1 223.3	2 623.5	4.8	53.4
November	787.6	1 318.1	43.6	70.6	1 388.7	1 236.2	2 624.9	5.1	52.9

For footnotes see end of table.

...continued

4 LABOUR FORCE STATUS, NSW—ORIGINAL—continued

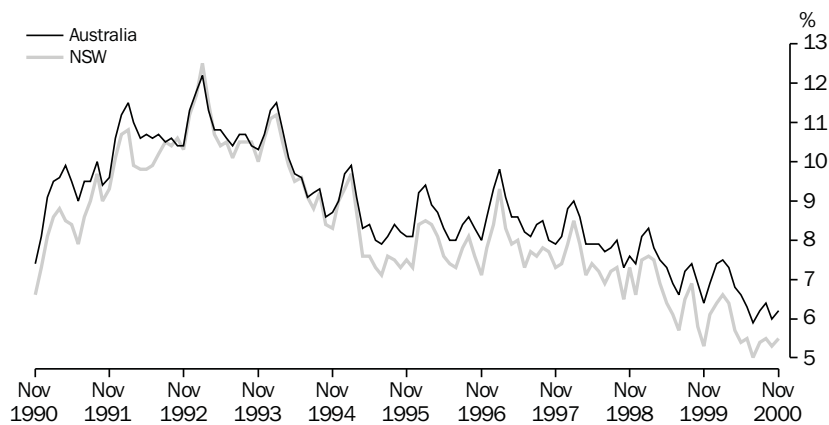
	<u>Employed</u>		<u>Unemployed</u>		<u>Labour force</u>	<u>Not in labour force</u>	<u>Civilian population aged 15 years and over</u>	<u>Unemployment rate(a)</u>	<u>Participation rate(b)</u>
	<u>Full-time workers</u>	<u>Total</u>	<u>Looking for full-time work</u>	<u>Total</u>					
	'000	'000	'000	'000					
PERSONS									
November									
1996	2 148.1	2 803.8	166.0	214.5	3 018.3	1 883.1	4 901.3	7.1	61.6
1997	2 158.8	2 845.8	178.8	223.6	3 069.4	1 895.6	4 965.0	7.3	61.8
1998	2 174.5	2 868.5	173.0	226.3	3 094.7	1 936.4	5 031.1	7.3	61.5
1999									
September	2 252.6	2 981.8	158.9	222.4	3 204.2	1 886.2	5 090.3	6.9	62.9
October	2 271.8	2 977.5	138.6	182.6	3 160.1	1 937.7	5 097.8	5.8	62.0
November	2 255.4	2 965.1	131.9	167.0	3 132.1	1 973.2	5 105.3	5.3	61.3
December	2 318.6	3 017.9	149.9	197.0	3 214.9	1 897.9	5 112.8	6.1	62.9
2000									
January	2 274.5	2 937.4	160.1	200.6	3 138.0	1 980.4	5 118.4	6.4	61.3
February	2 259.3	2 976.3	152.8	212.0	3 188.3	1 935.7	5 124.0	6.6	62.2
March	2 265.4	3 009.6	150.4	206.5	3 216.1	1 913.6	5 129.7	6.4	62.7
April	2 296.0	3 035.3	133.9	182.9	3 218.2	1 917.8	5 136.0	5.7	62.7
May	2 289.1	3 044.4	132.8	181.9	3 226.3	1 916.0	5 142.3	5.6	62.7
June	2 300.6	3 044.7	126.0	176.6	3 221.3	1 927.3	5 148.6	5.5	62.6
July	2 340.5	3 076.5	117.4	160.5	3 237.0	1 917.3	5 154.3	5.0	62.8
August	2 279.7	3 031.1	127.2	173.4	3 204.6	1 955.3	5 159.9	5.4	62.1
September	2 324.9	3 094.4	128.9	180.5	3 274.9	1 890.6	5 165.5	5.5	63.4
October	2 290.9	3 051.8	125.1	169.2	3 221.1	1 947.9	5 169.0	5.3	62.3
November	2 277.0	3 018.2	131.9	175.4	3 193.7	1 978.7	5 172.4	5.5	61.7

(a) The number of unemployed in each group expressed as a percentage of the labour force in the same group.

(b) The labour force in each group expressed as a percentage of the civilian population aged 15 years and over in the same group.

Source: Labour Force, Australia, Preliminary (Cat. no. 6202.0).

5 UNEMPLOYMENT RATE—ORIGINAL



Source: Labour Force, Australia, Preliminary (Cat. no. 6202.0).

6 COAL AND ELECTRICITY PRODUCTION, NSW AND AUSTRALIA—ORIGINAL

	Unit	Latest period	New South Wales				Australia		
			Latest figure	Change	Change	Latest figure	Change	Change	
				from prior period	from same period prior year		from prior period	from same period prior year	
			%	%		%	%		
Raw coal won									
Underground	'000 tonnes	Sept 2000	3 837	-31.6	-30.9	6 797	-23.2	-23.3	
Open cut	'000 tonnes	Sept 2000	8 301	-0.1	1.0	20 288	0.3	4.1	
Total	'000 tonnes	Sept 2000	12 138	-12.8	-11.8	27 085	-6.9	-4.5	
Electricity	mill. kWh	Sept qtr 2000	19 289	11.3	13.6	49 387	4.2	5.6	

Source: Joint Coal Board for NSW and Australia from ABS unpublished statistics, Manufacturing Production, Australia (Cat. no. 8301.0).

7 COAL AND ELECTRICITY PRODUCTION, NSW—ORIGINAL

	Raw coal won			Electricity
	Underground	Open cut	Total	
	'000 tonnes	'000 tonnes	'000 tonnes	
1997-98	58 299	75 710	134 009	61 804
1998-99	51 158	80 209	131 367	63 743
1999-2000	52 709	80 186	132 895	65 934
1999				
July	4 560	6 706	11 266	16 977
August	3 861	6 442	10 303	
September	5 552	8 215	13 767	
October	4 015	6 369	10 384	15 284
November	4 573	6 323	10 596	
December	5 918	6 967	11 985	
2000				
January	3 633	5 907	9 541	16 339
February	3 834	6 376	10 210	
March	4 799	6 549	11 348	
April	3 854	5 084	8 938	17 334
May	5 601	8 611	14 212	
June	3 793	6 443	10 237	
July	3 958	6 161	10 119	19 289
August	5 609	8 310	13 919	
September	3 837	8 301	12 138	

Source: Joint Coal Board, Manufacturing Production, Australia (Cat. no. 8301.0).

8 BUILDING APPROVALS—NSW AND AUSTRALIA

	Unit	Latest period	New South Wales			Australia		
			Latest figure	Change from prior period %	Change from same period prior year %	Latest figure	Change from prior period %	Change from same period prior year %
Number of dwelling units(a) (seasonally adjusted (b))								
New houses	no.	Oct 2000	1 733	23.3	-36.7	5 887	3.0	-43.0
Total	no.	Oct 2000	3 571	28.4	-24.9	9 496	6.0	-39.0
Value of new residential building (seasonally adjusted)	\$m	Oct 2000	458.2	15.2	-21.3	1 205.3	4.3	-35.2
Value of alterations and additions to residential building(c) (seasonally adjusted)	\$m	Oct 2000	115.6	42.4	-0.3	282.0	32.3	-0.1
Value of non-residential building(d) (original)	\$m	Oct 2000	380.7	23.2	43.0	1 028.5	3.1	18.5
Value of all building (original)	\$m	Oct 2000	938.4	22.7	3.2	2 520.7	5.9	-13.0

(a) Includes dwelling units approved as part of the construction of non-residential building and alterations and additions to existing buildings (including conversions to dwelling units).

(b) Seasonally adjusted and trend estimates to April 2000 have been revised. See Building Approvals, Australia (Cat. no. 8731.0).

(c) Valued at \$10,000 or more. Includes conversions of existing buildings into residential buildings.

(d) Valued at \$50,000 or more.

Source: Building Approvals, Australia (Cat. no. 8731.0).

9 BUILDING APPROVALS—NSW

	Number of dwelling units(a), seasonally adjusted				Value of building approvals(b)			
	New houses		Total		Seasonally adjusted		Original	
	Private sector	Total	Private sector	Total	Alterations and additions to residential building	Non-residential building(d)	All building	
	no.	no.	no.	no.	\$m	\$m	\$m	\$m
1996-97	5 169.2	11 356.6
1997-98	5 910.9	13 348.6
1998-99	4 543.4	11 932.3
1999								
August	r 2 613	r 2 616	r 4 668	r 4 722	r 632.2	114.9	r 568.5	r 1 347.6
September	r 2 330	r 2 364	r 4 456	r 4 501	r 542.0	r 111.9	260.6	r 939.0
October	2 714	2 739	r 4 617	r 4 758	r 582.5	116.0	266.3	r 909.6
November	r 2 822	r 2 841	r 4 289	r 4 362	r 526.0	r 105.9	276.1	r 1 006.5
December	r 3 048	r 3 065	r 4 606	r 4 652	r 591.7	r 114.6	280.5	r 980.9
2000								
January	r 2 742	r 2 756	r 4 302	r 4 395	r 627.6	r 92.8	361.6	r 956.0
February	r 2 882	r 2 898	r 4 264	r 4 378	r 569.3	r 123.7	283.5	r 954.6
March	r 2 635	r 2 645	r 4 036	r 4 065	r 515.1	r 125.1	444.9	r 1 083.4
April r	2 184	2 205	3 599	3 740	483.8	121.1	533.4	1 062.4
May r	2 045	2 063	3 867	3 952	533.2	124.1	311.4	1 098.1
June r	1 872	1 879	3 158	3 281	447.2	81.6	350.0	858.7
July	1 301	1 308	1 828	1 915	283.3	r 74.7	r 286.2	r 666.7
August	r 1 471	1 480	2 370	2 439	371.9	r 77.8	r 274.4	r 760.8
September r	1 400	1 406	2 696	2 781	397.6	81.2	309.0	764.6
October	1 723	1 733	3 527	3 571	458.2	115.6	380.7	938.4

(a) Includes dwelling units approved as part of the construction of non-residential building and alterations and additions to existing buildings (including conversions to dwelling units).

(b) From July 2000, value data for both residential and non-residential building approvals will be on a GST inclusive basis.

(c) Valued at \$10,000 or more. Includes conversions of existing buildings into residential buildings.

(d) Valued at \$50,000 or more.

Source: Building Approvals, Australia (Cat. no. 8731.0).

10 TURNOVER OF RETAIL ESTABLISHMENTS(a), NSW AND AUSTRALIA(b)—SEASONALLY ADJUSTED

	Latest period	New South Wales			Australia		
		Latest figure	Change from prior period	Change from same period prior year	Latest figure	Change from prior period	Change from same period prior year
		\$m	%	%	\$m	%	%
Food retailing	Oct 2000	1 647.2	0.3	3.9	5 066.8	0.7	3.3
Department stores	Oct 2000	390.5	-0.7	3.6	1 102.6	0.6	1.8
Clothing and soft good retailing	Oct 2000	312.0	-16.1	-2.7	812.1	-8.4	-3.1
Household good retailing	Oct 2000	470.6	2.1	2.5	1 482.4	0.9	3.7
Recreational good retailing	Oct 2000	213.8	3.8	12.8	590.5	-1.9	-1.9
Other retailing	Oct 2000	448.0	-1.4	5.6	1 409.2	3.8	10.7
Hospitality and services	Oct 2000	989.4	-6.6	16.6	2 273.7	-1.8	8.5
Total value of retail sales	Oct 2000	4 471.6	-2.5	6.4	12 737.4	-0.2	4.2

(a) The figures shown are derived from a monthly survey of retail establishments. Excludes motor vehicle, boat and caravan dealers, service stations, smash repairers, tyre and battery retailers, bread and milk vendors, footwear repairers and electrical appliance repairers n.e.c. Retail establishments which do not have employees are excluded from the survey. Turnover includes retail sales, wholesale sales, takings from repairs, meals and hiring of goods; and commissions from agency activity (e.g. commissions received from collecting dry cleaning, selling lottery tickets etc.).

(b) Data from July 2000 reference month onwards are recorded inclusive of GST.

Source: Retail Trade, Australia (Cat. no. 8501.0).

11 TURNOVER OF RETAIL ESTABLISHMENTS(a), NSW(b)—SEASONALLY ADJUSTED(c)

	Food retailing	Department stores	Clothing and soft good retailing	Household good retailing	Recreational good retailing	Other retailing	Hospitality and services	Total
	\$m	\$m	\$m	\$m	\$m	\$m	\$m	\$m
1999								
August	1 595.0	372.6	323.4	428.5	194.8	427.7	843.4	4 185.4
September	1 592.1	364.3	317.3	449.9	193.0	428.6	868.5	4 213.6
October	1 585.0	376.8	320.6	459.3	189.6	424.4	848.6	4 204.2
November	1 590.2	373.0	328.0	437.4	183.8	434.2	844.4	4 191.0
December	1 602.3	371.2	322.1	420.0	185.2	444.8	854.1	4 199.6
2000								
January	1 543.4	372.6	311.9	438.7	198.6	422.3	854.1	4 141.6
February	1 545.9	377.6	294.0	456.4	197.2	429.7	863.3	4 164.1
March	1 550.2	371.4	320.5	452.4	201.0	427.1	871.7	4 194.3
April	1 559.8	379.0	303.1	446.0	201.9	428.9	873.0	4 191.8
May	1 554.5	382.8	313.2	459.5	209.5	438.6	875.0	4 232.9
June	1 585.6	460.3	370.8	582.7	204.3	479.5	887.7	4 570.9
July	1 595.5	301.6	274.3	427.1	219.8	393.1	933.1	4 144.6
August	1 645.2	401.8	297.1	472.2	215.9	426.9	988.5	4 447.6
September	1 642.8	393.2	371.7	461.1	205.9	454.3	1 059.5	4 588.6
October	1 647.2	390.5	312.0	470.6	213.8	448.0	989.4	4 471.6

(a) The figures shown are derived from a monthly survey of retail establishments. Excludes motor vehicle, boat and caravan dealers, service stations, smash repairers, tyre and battery retailers, bread and milk vendors, footwear repairers and electrical appliance repairers n.e.c. Retail establishments which do not have employees are excluded from the survey. Turnover includes retail sales, wholesale sales, takings from repairs, meals and hiring of goods; and commissions from agency activity (e.g. commissions received from collecting dry cleaning, selling lottery tickets etc.).

(b) Data from July 2000 reference month onwards are recorded inclusive of GST.

(c) Data for previous months have been revised due to concurrent seasonal adjustment methodology. See Explanatory Notes in Retail Trade, Australia (Cat. no. 8501.0).

Source: Retail Trade, Australia (Cat. no. 8501.0).

12 NEW MOTOR VEHICLE REGISTRATIONS(a), NSW AND AUSTRALIA—SEASONALLY ADJUSTED

	Latest period	New South Wales			Australia		
		Latest figure	Change from prior period	Change from same period prior year	Latest figure	Change from prior period	Change from same period prior year
		no.	%	%	no.	%	%
Passenger vehicles	Oct 2000	18 336	-6.7	2.9	54 859	-5.6	12.1
Other vehicles (excluding motor cycles)	Oct 2000	3 317	-0.5	-12.8	9 830	-2.3	-9.9
Total registrations (excluding motor cycles)	Oct 2000	21 653	-5.8	0.1	64 689	-5.1	8.1

(a) Includes vehicles (other than those of the defence forces) owned by Government departments and authorities. Excludes mobile plant and equipment, tractors, trailers and non-motorised caravans.

Source: *New Motor Vehicle Registrations, Australia, Preliminary (Cat. no. 9301.0)*.

13 NEW MOTOR VEHICLE REGISTRATIONS(a), NSW—SEASONALLY ADJUSTED

	Passenger vehicles	Other vehicles (excluding motor cycles)	Total (excluding motor cycles)
	no.	no.	no.
1999			
August	17 713	3 449	21 162
September	18 022	3 553	21 574
October	17 819	3 802	21 621
November	18 426	3 942	22 368
December	19 679	4 395	24 074
2000			
January	17 675	3 672	21 347
February	18 376	3 977	22 352
March	18 314	3 530	21 844
April	17 517	3 451	20 968
May	16 439	3 661	20 100
June	13 911	3 708	17 619
July	23 285	2 958	26 243
August	23 263	3 684	26 947
September	19 653	3 333	22 986
October	18 336	3 317	21 653

(a) Includes vehicles (other than those of the defence forces) owned by Government departments and authorities. Excludes mobile plant and equipment, tractors, trailers and non-motorised caravans.

Source: *New Motor Vehicle Registrations, Australia, Preliminary (Cat. no. 9301.0)*.

14 ACCOMMODATION ESTABLISHMENTS(a) NSW AND AUSTRALIA—ORIGINAL

	Unit	New South Wales				Australia		
		Latest period	Latest figure	Change from prior period	Change from same period prior year	Latest figure	Change from prior period	Change from same period prior year
				%	%		%	%
Room nights	'000	Sept qtr 2000	3 543.3	6.6	5.9	10 448.6	4.5	0.5
Room occupancy rate	%	Sept qtr 2000	59.7	2.8	-2.3	58.4	2.3	-3.9
Takings(b)	\$'000	Sept qtr 2000	555 244	48.5	48.1	1 302 158	25.3	20.8

(a) Licensed hotels with facilities, motels and guest houses and serviced apartments with 15 or more rooms or units.

(b) Includes GST.

Source: *Tourist Accommodation, Australia (Cat. no. 8635.0)*.

15 ACCOMMODATION ESTABLISHMENTS(a) SYDNEY AND NSW—ORIGINAL

	Sydney Tourism Region(b)			New South Wales		
	Room nights	Room occupancy rate	Takings(c)	Room nights	Room occupancy rate	Takings
	'000	%	\$'000	'000	%	\$'000
1999						
June qtr	1 731.3	68.0	226 273	3 099.9	57.9	332 827
September qtr	1 865.9	71.6	247 543	3 345.0	61.1	375 014
December qtr	1 962.5	72.3	276 165	3 423.1	60.9	395 165
2000						
March qtr 2000	1 980.0	71.7	279 374	3 388.1	60.3	397 869
June qtr 2000	1 902.6	67.1	258 225	3 324.0	58.1	374 005
September qtr 2000	2 093.6	69.6	412 378	3 543.3	59.7	555 244

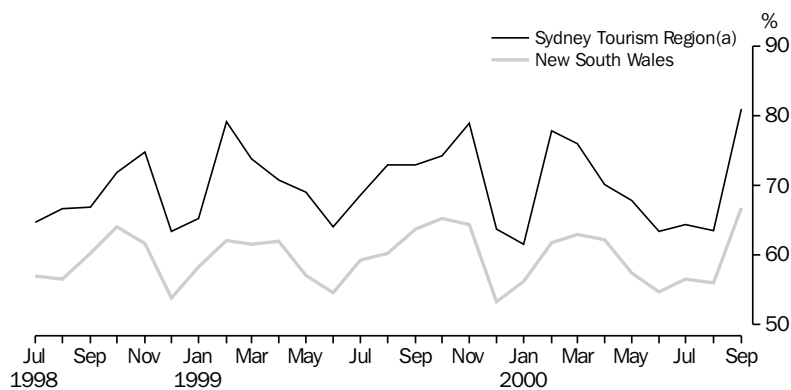
(a) Licensed hotels with facilities, motels and guest houses and serviced apartments with 15 or more rooms or units.

(b) Excludes Gosford, Wyong and Blue Mountains Statistical Local Areas.

(c) Takings after 1 July 2000 are on a GST inclusive basis.

Source: *Tourist Accommodation, Small Area Data, New South Wales (Cat. no. 8635.1.40.001)*.

16 ACCOMMODATION ESTABLISHMENTS,
MONTHLY ROOM OCCUPANCY RATE—ORIGINAL



(a) Excludes Gosford, Wyong and Blue Mountains Statistical Local Areas.

Source: *Tourist Accommodation, Small Area Data, NSW (Prod. no. 8635.1.40.001)*.

17 CONSUMER AND PRODUCER PRICE INDEXES—NSW AND AUSTRALIA

	Unit	Latest period	Latest figure	New South Wales(a)		Australia(b)		
				Change from prior period %	Change from same period prior year %	Latest figure	Change from prior period %	Change from same period prior year %
Consumer Price Index (all groups)	1989-90 =100.0	Sep qtr 2000	131.6	3.6	6.0	130.9	3.7	6.1
Price index of materials used in house building (all groups)	1989-90 =100.0	Sep qtr 2000	130.0	-0.9	5.1	124.5	-0.8	3.3
Price index of materials used in building other than house building (all groups)	1989-90 =100.0	Sep qtr 2000	115.4	-1.6	0.3	115.5	-1.6	0.3

(a) Refers to State capital city—Sydney.

(b) For the Consumer Price Index this is the weighted average of eight capital cities and for the other two indexes, the weighted average of the six State capital cities.

Source: Consumer Price Index, Australia (Cat. no. 6401.0); Price Index of Materials Used in Building Other Than House Building, Six State Capital Cities (Cat. no. 6407.0); Price Index of Materials Used in House Building, Six State Capital Cities (Cat. no. 6408.0).

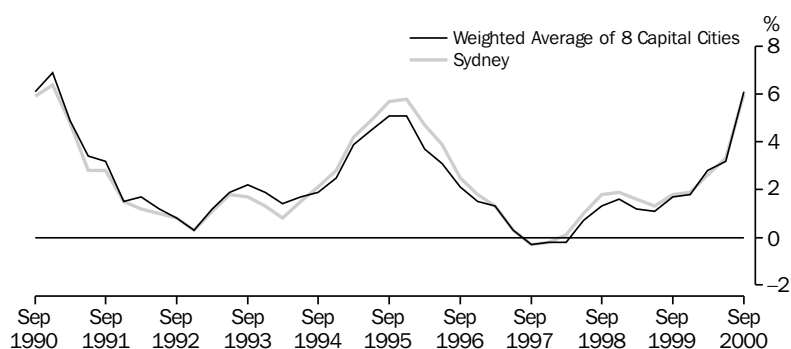
18 CONSUMER AND PRODUCER PRICE INDEXES—NSW(a)

	Consumer Price Index, all groups 1989-90 = 100.0	Price Index of materials used in house building, all groups 1989-90 = 100.0	Price Index of materials used in building other than house building, all groups 1989-90 = 100.0
1999			
June qtr	123.0	121.8	115.4
September qtr	124.1	123.7	115.1
December qtr	124.7	124.4	115.3
2000			
March qtr	125.8	128.0	116.4
June qtr	127.0	131.2	117.3
September qtr	131.6	130.0	115.4

(a) Refers to State capital city—Sydney.

Source: Consumer Price Index, Australia (Cat. no. 6401.0); Price Index of Materials Used in Building Other Than House Building, Six State Capital Cities (Cat. no. 6407.0); Price Index of Materials Used in House Building, Six State Capital Cities (Cat. no. 6408.0).

19 CONSUMER PRICE INDEX, ANNUAL RATE OF CHANGE



Source: Consumer Price Index (Cat. no. 6401.0).

20 SECURED HOUSING FINANCE COMMITMENTS TO INDIVIDUALS FOR OWNER OCCUPATION—NSW AND AUSTRALIA

	Latest period	New South Wales			Australia		
		Latest figure	Change from prior period	Change from same period prior year	Latest figure	Change from prior period	Change from same period prior year
Lending commitments for the construction or purchase of dwellings—							
Construction of dwellings	Oct 2000	147	-3.3	-49.3	521	-2.8	-48.0
Purchase of newly erected dwellings	Oct 2000	69	-16.9	-33.7	182	-8.5	-32.1
Purchase of established dwellings(a)	Oct 2000	1 362	-7.2	-30.4	3 427	-0.8	-21.0
Refinancing of existing dwellings	Oct 2000	455	8.9	8.9	1 062	4.8	7.8
Lending commitments for alterations and additions	Oct 2000	88	4.8	-20.0	239	7.2	-36.3
Total lending commitments to individuals for housing(b)	Oct 2000	2 033	-4.1	-26.6	5 192	-0.2	-21.2
Total lending commitments to individuals for housing (seasonally adjusted)(b)	Oct 2000	2 051	-5.3	-29.1	5 183	-4.9	-24.2

(a) Excludes refinancing.

(b) Excludes alterations and additions.

Source: *Housing Finance for Owner Occupation, Australia (Cat. no. 5609.0)*.

21 SECURED HOUSING FINANCE COMMITMENTS TO INDIVIDUALS FOR OWNER OCCUPATION—NSW

	Lending commitments for the construction or purchase of dwellings					Total lending commitments to individuals for housing(b)	
	Construction of dwellings	Purchase of newly erected dwellings	Purchase of established dwellings(a)	Refinancing of existing dwellings	Lending commitments for alterations and additions	Original	Seasonally adjusted
1997-98	2 625	1 280	14 445	3 573	1 174	21 923	..
1998-99	2 990	1 147	16 761	4 026	1 126	24 925	..
1999-2000	3 268	1 129	21 637	4 993	1 271	31 027	..
1999							
August	286	90	1 800	396	96	2 572	r 2 551
September	315	101	1 841	394	106	2 652	r 2 600
October	290	104	1 956	418	110	2 768	r 2 894
November	329	115	2 122	460	120	3 026	r 2 816
December	275	90	1 893	415	105	2 672	r 2 768
2000							
January	226	70	1 404	309	83	2 010	r 2 713
February	324	103	1 759	423	114	2 609	r 2 656
March	296	101	1 956	488	123	2 842	r 2 492
April	213	77	1 581	358	94	2 229	r 2 407
May	246	94	1 909	524	119	2 772	r 2 402
June	197	86	r 1 629	474	105	r 2 386	r 2 232
July	170	r 71	r 1 436	r 451	89	r 2 129	r 2 166
August	r 166	r 88	r 1 710	r 480	91	r 2 444	r 2 336
September	r 152	r 83	r 1 467	r 418	84	r 2 120	r 2 165
October	147	69	1 362	455	88	2 033	2 051

(a) Excludes refinancing.

(b) Excludes alterations and additions.

Source: *Housing Finance for Owner Occupation, Australia (Cat. no. 5609.0)*.

22 NSW GOVERNMENT FINANCE, GENERAL GOVERNMENT SECTOR(a)

	Budget 12 months to 30/06/2001	Actual 4 months to 31/10/2000
	\$m	\$m
State revenues		
Taxation	12 412	4 169
Commonwealth grants	12 780	3 834
Financial distributions	1 210	380
Fines, regulatory fees and other	792	311
<i>Total state revenues</i>	27 194	8 694
Operating revenues		
Sale of goods and services	2 171	749
Investment income	391	170
Grants and contributions	421	205
Other revenue	280	102
<i>Total operating revenues</i>	3 263	1 226
Expenses		
Employee related — superannuation	1 540	509
Employee related — other	12 157	3 972
Other operating	6 765	2 150
Maintenance	1 120	289
Depreciation and amortisation	995	472
Recurrent grants and subsidies	3 944	1 418
Capital grants and subsidies	1 397	390
Finance costs	1 287	610
<i>Total expenses</i>	29 205	9 810
Gain/(loss) on sale of non-current assets	-14	7
Net cost of services	25 956	8 577
Surplus (underlying)	1 238	117
Abnormal items	2 400	2 582
Surplus/(deficit) for the year	3 638	2 699
less valuation gains	-1 888	-2 233
GFS net operating balance	1 750	466
less capital acquisitions	-2 493	-774
plus depreciation	995	472
plus asset sales & other	407	35
<i>GFS net lending</i>	659	199

(a) Prior to the 2000–2001 Budget, NSW Government Finance Statistics were published on a cash basis. Monthly Government Finance Statistics reporting has now moved to an accruals framework.

Source: Financial Statement released by NSW Treasury. Figures may differ from data published in annual ABS publications.

23 ACTUAL PRIVATE NEW FIXED CAPITAL EXPENDITURE, CURRENT PRICES, NSW AND AUSTRALIA—TREND

Type of asset	Latest period	New South Wales			Australia		
		Latest figure	Change from prior period	Change from same period prior year	Latest figure	Change from prior period	Change from same period prior year
		\$m	%	%	\$m	%	%
New buildings and structures	Sep qtr 2000	985	2.0	5.3	3 012	3.1	5.1
Equipment, plant and machinery	Sep qtr 2000	3 181	6.3	24.3	7 523	-0.3	-1.1
Total	Sep qtr 2000	4 166	5.3	19.2	10 535	0.6	0.9

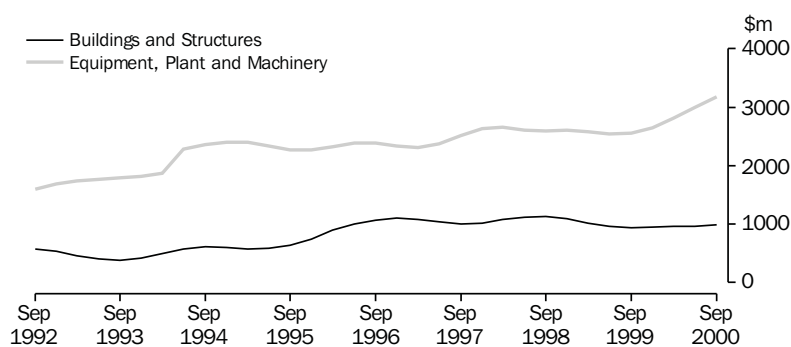
Source: State Estimates of Private New Capital Expenditure (Cat. no. 5646.0).

24 ACTUAL PRIVATE NEW FIXED CAPITAL EXPENDITURE, CURRENT PRICES, NSW—TREND

	Type of asset		
	New buildings and structures	Equipment, plant and machinery	Total
	\$m	\$m	\$m
1999			
June qtr	959	2 543	3 502
September qtr	935	2 559	3 494
December qtr	948	2 647	3 595
2000			
March qtr	956	2 818	3 774
June qtr	966	2 992	3 958
September qtr	985	3 181	4 166

Source: State Estimates of New Capital Expenditure (Cat. no. 5646.0).

25 ACTUAL PRIVATE NEW FIXED CAPITAL EXPENDITURE, CURRENT PRICES, NSW—TREND



Source: State Estimates of New Capital Expenditure (Cat. no. 5646.0).

26 INTERNATIONAL TRADE, IMPORTS(a) AND EXPORTS(b)—NSW AND AUSTRALIA

	Latest period	New South Wales			Australia		
		Latest figure	Change from prior period	Change from same period prior year	Latest figure	Change from prior period	Change from same period prior year
		\$m	%	%	\$m	%	%
Overseas imports into NSW	Oct 2000	4 865	8.3	29.2	10 951	10.9	7.2
Total overseas exports(c)	Oct 2000	2 008	8.9	29.5	10 144	9.8	39.6
Export commodities and SITC(d) code							
Meat and meat preparations (01)	Oct 2000	118	32.6	30.6	523	19.0	38.2
Cereals and cereal preparations (04)	Oct 2000	157	5.1	51.8	452	-2.4	19.7
Wool and other animal hair (268)	Oct 2000	112	43.0	43.5	358	28.2	60.5
Coal, coke and briquettes (32)	Oct 2000	335	14.8	40.5	910	7.7	32.8
Iron and steel (67)	Oct 2000	11	13.9	-79.7	51	15.4	-48.9
Aluminium (684)	Oct 2000	148	10.2	40.8	461	37.5	47.2
Office machines and automatic data processing machines (75)	Oct 2000	36	20.1	23.9	64	31.0	16.0

(a) Figures shown are Customs value.

(b) Figures shown are Free On Board (FOB) values.

(c) Excludes re-exported goods.

(d) Standard International Trade Classification Revision 3.

Source: ABS unpublished data, International Trade database.

27 INTERNATIONAL TRADE, IMPORTS(a) AND EXPORTS(b)—NSW

	Overseas exports of SITC(c) commodities								
	Overseas imports into NSW	Total overseas exports(d)	Meat and meat preparations (01)	Cereals and cereal preparations (04)	Wool and other animal hair (268)	Coal, coke and briquettes (32)	Iron and steel (67)	Aluminium (684)	Office machines and automatic data processing machines (75)
	\$m	\$m	\$m	\$m	\$m	\$m	\$m	\$m	\$m
1998-1999	42 142	17 948	948	1 234	685	3 766	958	1 151	333
1999-2000	r 47 944	r 18 965	1 047	r 1 271	826	3 092	830	1 341	r 379
1999									
August	3 806	1 535	85	r 116	50	277	48	96	35
September	4 098	1 573	81	94	69	249	59	107	29
October	3 765	r 1 550	91	103	78	239	53	105	29
November	4 272	r 1 579	90	107	93	244	67	104	34
December	3 975	r 1 583	94	112	83	211	68	112	28
2000									
January	3 462	1 331	68	68	55	261	50	101	22
February	3 731	r 1 515	86	114	72	226	r 60	122	32
March	4 341	1 637	95	123	78	238	79	132	43
April	3 534	r 1 612	87	94	59	285	r 98	109	35
May	r 4 587	r 1 770	93	118	69	295	108	122	30
June	4 876	r 1 768	93	112	66	268	94	129	29
July	r 4 507	1 779	101	138	66	318	64	129	31
August	r 4 976	r 1 825	r 99	143	66	301	r 67	r 134	r 27
September	4 492	r 1 844	r 89	149	r 78	292	9	134	r 30
October	4 865	2 008	118	157	112	335	11	148	36

(a) Figures shown are Customs value.

(b) Figures shown are Free On Board (FOB) values.

(c) Standard International Trade Classification Revision 3.

(d) Excludes re-exported goods.

Source: ABS unpublished data, International Trade database.

FOR MORE INFORMATION...

- INTERNET* **www.abs.gov.au** the ABS web site is the best place to start for access to summary data from our latest publications, information about the ABS, advice about upcoming releases, our catalogue, and Australia Now—a statistical profile.
- LIBRARY* A range of ABS publications is available from public and tertiary libraries Australia-wide. Contact your nearest library to determine whether it has the ABS statistics you require, or visit our web site for a list of libraries.
- CPI INFOLINE* For current and historical Consumer Price Index data, call 1902 981 074 (call cost 77c per minute).
- DIAL-A-STATISTIC* For the latest figures for National Accounts, Balance of Payments, Labour Force, Average Weekly Earnings, Estimated Resident Population and the Consumer Price Index call 1900 986 400 (call cost 77c per minute).

INFORMATION SERVICE

Data which have been published and can be provided within five minutes are free of charge. Our information consultants can also help you to access the full range of ABS information—ABS user-pays services can be tailored to your needs, time frame and budget. Publications may be purchased. Specialists are on hand to help you with analytical or methodological advice.

- PHONE* **1300 135 070**
- EMAIL* **client.services@abs.gov.au**
- FAX* 1300 135 211
- POST* Client Services, ABS, GPO Box 796, Sydney 1041

WHY NOT SUBSCRIBE?

ABS subscription services provide regular, convenient and prompt deliveries of ABS publications and products as they are released. Email delivery of monthly and quarterly publications is available.

- PHONE* 1300 366 323
- EMAIL* subscriptions@abs.gov.au
- FAX* 03 9615 7848
- POST* Subscription Services, ABS, GPO Box 2796Y, Melbourne 3001



2130710001016
ISSN 1031-8534

RRP \$18.00